



# BEE-LOCK P1

## Smart Lock User Manual



**Secure**



**DIY  
Installation**



**Remote  
Setup**



**Always On**



**Live Trails**

## 1. Introduction

Thank you for choosing BeeSecure BEE-LOCK P1.

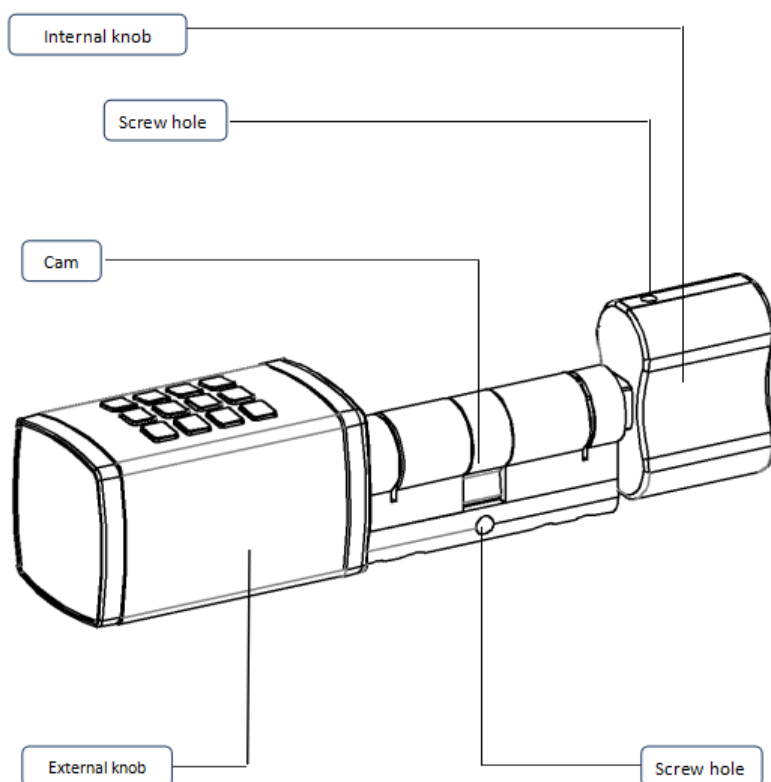
BEE-LOCK P1 is a passcode enabled electronic smart lock. It can be used both in standalone mode or through the App Control together with the BEE-HUB (purchased separately). With BEE-LOCK P1, you can create up to 200 users and can always control who can access your properties. BEE-LOCK P1 is a DIY Lock which can be installed in approximately 5 minutes without the need of external tools. From now on, say goodbye to your keys and have control of your Bee Lock P1 by checking the live status on your smart phone at any time, from anywhere!

Ideal for private houses, Airbnb and offices.

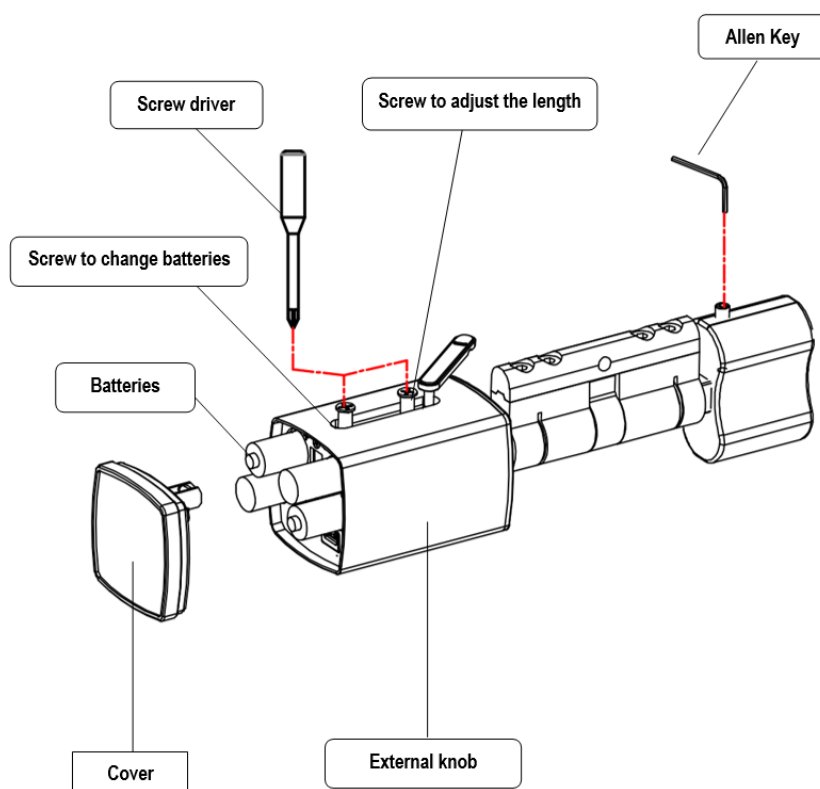
Please ensure you read the user manual completely before using the BEE-LOCK P1.

### 1.1 Product Description

#### Exterior View



## Breakdown View



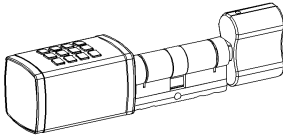
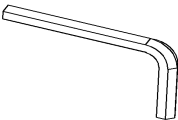





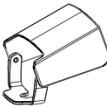

## 1.2 Specifications

<b>Dimensions</b>	External Knob: 42mm(W) x 42mm(H) x 68mm (D); Internal Knob: 48mm (W) x 27mm(H) x 37mm(D);
<b>Passcode Length</b>	6-10 digits
<b>Number of Users</b>	up to 200
<b>Working Temperature</b>	-25 ° C to + 55 ° C
<b>Working Humidity</b>	<90%
<b>Battery</b>	4 x AAA 1.5 Volt
<b>Battery Life</b>	Lasts approximately 1 year (when lock is used 10 times a day)
<b>Warranty</b>	2 Year



The product should not be modified in any way except in accordance with those modifications described in the instructions

### 1.3 What Is in the Box?

Part	Quantity	Picture
P1 Lock	1	
Allen key(2mm)	1	
Allen key(1.5 mm)	1	
Screw driver(3mm)	1	
Cylinder Cover ( 5 mm )	2	
Cylinder Cover ( 2.5 mm )	2	
Cross recessed countersunk M5 screw (80mm)	1	
Privacy Cap	1	
Battery	4	

## 1.4 Product Features

BEE-LOCK P1 can be used both in standalone mode and through the App Control mode. To operate the product to its full potential, we suggest you use the BEE-LOCK P1 in combination with BEE-HUB.

With the BEE-HUB you can configure and view your device's status remotely via the APP.

Refer to the table below for a detailed explanation on the differences of using BEE-LOCK P1 in standalone and APP control mode (with BEE-HUB):

Feature	Standalone Mode	APP Control (via BEE-HUB)
Initialize the Lock	✓	
Add Your Own Passcode	✓	✓
Add Passcode for Other Users		✓
Change Own Passcode	✓	
Add/Delete User	✓	✓
Activate Open Mode	✓	
Deactivate Open Mode	✓	✓
Create Time-Limit/Agenda User		✓
Delete Time-Limit/Agenda User		✓
Create One-Time-Code (OTC)		✓
Delete One-Time-Code (OTC)	✓	✓
Share OTC via SMS/Email/WhatsApp...		✓
Unlimited Live Audit Trails		✓
Security Alert at mobile		✓

## 1.5 User Level Definition

There are 4 user administration layers supported by BEE-LOCK P1 with different authorizations and functionalities:

1. **Master user:** initialize the manufacturer default, add own passcode, change own passcode, add and delete users, switch opening mode ON/OFF, connect and disconnect the lock to the hub and reset the device.
2. **Secondary user:** add own passcode, change own passcode, Add and delete users, switch

opening mode ON/OFF.

### 3. Regular user

- **Regular with permanent access:** add and change own passcode
- **Regular with Time limit access & Regular with Agenda access:** multiple entries at a specified period/date and time

### 4. OTC: single entry opening.

For security reasons, **only ONE master** user can be set. The master user can invite other users to co-manage the smart lock from BeeSecure App . Master user cannot be deleted from BEE-LOCK P1. In total, BEE-LOCK P1 can store up to 200 users with mixed user types.

## 1.6 Steps to Follow

- **Step 1:** Install Batteries
- **Step 2:** Initiate BEE-LOCK P1 and set up Master User Passcode
- **Step 3\*:** Download BeeSecure App and Register
- **Step 4\*:** Add BEE-HUB to Wi-Fi
- **Step 5\*:** Pair BEE-LOCK P1 with BEE-HUB
- **Step 6:** Install BEE-LOCK P1 at your door
- **Step 7:** Set up the lock

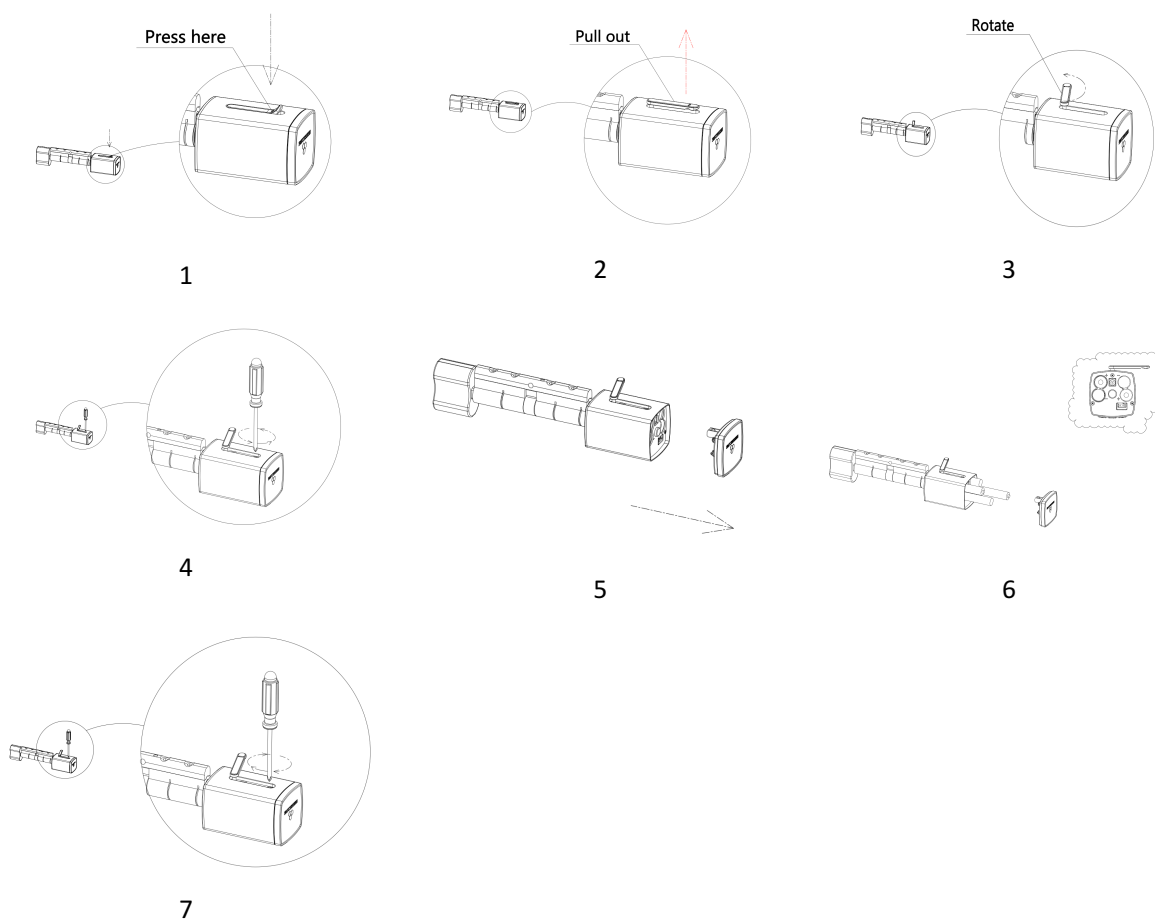
We suggest you follow the steps above and install the lock on your door after the configuration of the lock.

Step 3 - 5 are optional, and only needed if you use your BEE-LOCK in combination with BEE-HUB.

## 2. Getting Started

### 2.1 Battery Installation

1. Open the back cover of the external knob by pressing the sealing strip.
2. Pull out the sealing strip.
3. Rotate the sealing strip.
4. Unscrew the screw that's closer to the logo to change the batteries (Do not unscrew the screw to adjust the length).
5. Remove the battery cover.
6. Insert four AAA batteries in the battery holder (pay attention to the positive and negative electrodes)
7. Fasten the cover of the battery. Fix the screw to finish



## 2.2 Initiate BEE-LOCK P1 and set up Master User Passcode

**Important Notice:** Before you use the lock, you need to initiate the lock with the factory default code and set up the master user passcode.

### The factory default code is : 0123456

When you choose a passcode, avoid obvious combinations such as the numbers of your date of birth or part of your telephone number or zip code. Remember to keep your passcode confidential. If you would like to write down the code, please keep it stored in a safe place.

Furthermore, the access code must consist of a minimum of 6 and a maximum of 10 digits. Make sure you choose a strong access code. If you create a new code, the lock will check whether it is not a consecutive series of numbers. The lock will also give an error message if you use a code that has already been selected by another user.

Follow the steps below to initiate your lock

Step	Operation	Key	Keyboard Light	Signal Sound
1	Press # for <b>3 times</b>	<b>###</b>	Green flash x2	
2	Enter Default code <b>0123456</b> and <b>press #</b> to confirm	<b>0123456#</b>	Green flash x2	Do-re-mi
3	Enter Master <b>User</b> passcode, e.g. 135790 and <b>press #</b> to confirm	<b>135790#</b>	Green flash x2	Beep-beep
4	Repeat Master <b>User</b> passcode and <b>press #</b> to confirm	<b>135790#</b>	Green flash x2	Do-re-mi

During the process, if you hear long beep, it indicates you that the operation failed. Please try again from step 1.

Example: Input factory default code 0123456 and set up master code 135790:

###0123456# 135790# 135790#



## 2.3 Open the Lock

Step	Operation	Key	Keyboard Light	Signal Sound
1	Enter your <b>Passcode</b> ,e.g. 135790, followed by <b>#</b>	<b>135790#</b>	Green flash x2	Do-re-mi
2	Rotate the external knob in <b>clockwise</b> direction. Rotate within 6 seconds before the lock auto locks itself.			

## 2.4 Re-Lock the lock

You can always add extra re-lock to double secure the safety of the lock. Follow the steps below:

- a) **From Outside:** Enter correct passcode and rotate the external knob in **anti-clockwise** direction within **6 seconds**. Six seconds later, the lock automatically switches to sleep mode and can't be opened.
- b) **From Inside:** rotate the internal knob in **anti-clockwise** direction without inputting code or time limitation

## 2.5 Add User

Both Master User /Secondary User can add a new user.

You can add a Secondary User or Regular User with Permanent Access on the BEE-LOCK P1. To add a temporary user or One-Time-Code (OTC) user from BeeSecure App

Step	Operation	Key	Keyboard Light	Signal Sound
1	Press <b>#</b> for <b>3 times</b>	<b>###</b>	Green flash X2	
2	Enter <b>Master User /Secondary User Passcode</b> , e.g. 135790, followed by <b>#</b>	<b>135790#</b>	Green flash X2	Do-re-mi
3	Press <b>3</b>	<b>3</b>	Green light	Beep-beep

4	Press <b>1</b> to add a secondary user, or press <b>2</b> to add regular user with permanent access	<b>1 or 2</b>	Green light	Beep-beep
5	Enter <b>6-10 digits New passcode</b> for the user, , e.g. 147369 followed by #	<b>147369#</b>	Green light	Beep-beep
6	<b>Repeat the passcode</b> for the user followed by #	<b>147369#</b>	Green light	Do-re-mi

During the process, if you hear long beep, it indicates you that the operation failed. Please try again from step 1.

Example: Add new secondary user with passcode 147369:

###135790# 3 1 147369#

## 2.6 Delete User

Both Master User /Secondary User can delete an existing user.

By inputting any passcode of the user you wish to delete, the user and all his/her passcode will be deleted from BEE-LOCK P1 permanently.

Step	Operation	Key	Keyboard Light	Signal Sound
1	Press # for <b>3 times</b>	<b>###</b>	Green flash x2	
2	Enter Master User /Secondary User Passcode, e.g. 135790, followed by #	<b>135790#</b>	Green flash x2	Do-re-mi
3	Press <b>4</b>	<b>4</b>	Green light	Beep-beep
4	Enter any of the user's passcodes, e.g. 147369, followed by #	<b>146739#</b>	Green light	Do-re-mi

During the process, if you hear a long beep, it indicates that the operation failed. Please try again from step 1.

Example: Delete user with passcode 147369

###135790# 4 147369#

## 2.7 Add Your Own Passcode

As Master User, Secondary User or Regular User with Permanent Access, you can add up to 5 passcodes to your own account. You can use any of your passcodes to unlock the BEE-LOCK P1.

Step	Operation	Key	Keyboard Light	Signal Sound
1	Press # for <b>3 times</b>	<b>###</b>	Green flash x2	
2	Enter your Passcode, e.g. 135790, followed by # to confirm	135790#	Green flash x2	Do-re-mi
3	Press <b>1</b>	<b>1</b>	Green light	Beep-beep
4	Enter a <b>6-10 digits New passcode</b> for the user , e.g. 258369, followed by # to confirm	258369#	Green light	Beep-beep
5	<b>Repeat the passcode</b> for the user followed by # to confirm	258369#	Green light	Do-re-mi

During the process, if you hear a long beep, it indicates that the operation failed. Please try again from step 1.

Example: Add new passcode 258369 for the Master user with passcode 135790:

###135790# 1 258369# 258369#

## 2.8 Change Your Own Passcode

As Master User, Secondary User or Regular User with Permanent Access, you change any of your passcodes.

Step	Operation	Key	Keyboard Light	Signal Sound
1	Press # for <b>3 times</b>	<b>###</b>	Green flash x2	

2	Enter the passcode you want to change, e.g. 135790, followed by #	<b>135790#</b>	Green flash x2	Do-re-mi
3	Press 2	<b>2</b>	Green light	Beep-beep
4	Enter <b>6-10 digits New passcode</b> , e.g. 789654, followed by #	<b>789654#</b>	Green light	Beep-beep
5	<b>Repeat the passcode</b> , followed by #	<b>789654#</b>	Green light	Do-re-mi

During the process, if you hear a long beep, it indicates that the operation failed. Please try again from step 1.

Example: Change the existing passcode 135790 to 789654 for Master user:

###135790# 2 789654# 789654#

## 2.9 Open Mode

For offices and houses, you can activate Open Mode. It allows continuous entry for “non-restricted” traffic. It means your guests/families/employees do not need to input a passcode to enter. It is ideal for offices during regular open hours. By activating Open mode, it can save the battery usage of the lock.

Both Master user and secondary users can activate open mode from the BEE-LOCK P1. To activate Open Mode, BEE-LOCK P1 will ask you to re- enter your passcode to ensure that you are aware of your operation and put extra security to verify your authorization.

Step	Operation	Key	Keyboard Light	Signal Sound
1	Press # for <b>3 times</b>	<b>###</b>	Green flash x2	
2	Enter Master/secondary user passcode, e.g. 135790, followed by #	<b>135790#</b>	Green flash x2	Do-re-mi
3	Press <b>5</b>	<b>5</b>	Green light	Beep-beep
4	Repeat the passcode followed by #	<b>135790#</b>	Green light	Do-re-mi

During the process, if you hear a long beep, it indicates that the operation failed. Please try again from step 1.

Example: activate open mode as Master user:

###135790# 5 135790#

For security reasons, you can only activate open mode locally on the BEE-LOCK P1 to ensure someone is in your property. However, you can deactivate Open Mode both locally and from the App.

## 2.10 Deactivate Open Mode

Both Master user and secondary users can deactivate open mode. After deactivation of the Open Mode, a passcode will be requested to enter

Step	Operation	Key	Keyboard Light	Signal Sound
1	Press # <b>3 times</b>	<b>###</b>	Green flash x2	
2	Enter your passcode , e.g. 135790, followed by #	<b>135790#</b>	Green flash x2	Do-re-mi
3	Press <b>6</b>	<b>6</b>	Green light	Beep-beep

During the process, if you hear a long beep, it indicates that the operation failed. Please try again from step 1.

Example: Deactivate open mode as Master user:

###135790# 6

## 2.11 Reset The Lock

As Master user, you can reset the lock to manufacture settings. After reset, all data including user information and settings will be removed. You can only operate resetting as Master user from the lock locally for security reason.

Step	Operation	Key	Keyboard Light	Signal Sound
1	Press # for <b>3 times</b>	<b>###</b>	Green flash x2	
2	Enter your passcode, e.g. 135790, followed by #	<b>135790#</b>	Green flash x2	Do-re-mi
3	Press <b>0</b>	<b>0</b>	Green flash x2	Beep-beep
4	Repeat your passcode followed by #	<b>135790#</b>	Green light	Long beep

Example: Reset the lock as Master user

###135790# 0 135790#

## 2.12 Summary

You can refer the summary table below as a quick manual to set up your BEE-LOCK P1 as standalone mode:

BEE-LOCK P1 Setup Table		
Step 1 <b>Authorization</b> for setup:	Press ###; Enter your personal 6-10-digit passcode; Press # to confirm	
Step 2 <b>Set up</b> :	Follow the instructions from the table below	
Function	Operation	User Type
<b>Reset the lock</b>	Press <b>0</b> on the main menu; Enter <b>Master passcode</b> ; Press # to confirm	-Master User
<b>Add own Passcode</b>	Press <b>1</b> on the main menu; Enter your <b>new 6-10 digit passcode</b> and press # to confirm <b>Re-enter new passcode</b> and press # to confirm	- Master User - Secondary User - Regular User (with permanent access)
<b>Change own Passcode</b>	Press <b>2</b> on the main menu; Enter your <b>current passcode</b> ; Press # to confirm	- Master User - Secondary User

	Enter a new <b>6-10-digit passcode</b> and press # to confirm <b>Re-enter new passcode</b> and press # to confirm	-Regular User (with permanent access)
<b>Add User</b>	Press <b>3</b> on the main menu; Press <b>1</b> for adding secondary User Press <b>2</b> for adding regular user Enter new <b>6-10-digit passcode</b> for the user; Press # to confirm <b>Re-enter new passcode</b> and press # to confirm	-Master User -Secondary User
<b>Delete User</b>	Press <b>4</b> on the main menu Enter any <b>passcode</b> of the user you want to delete; Press # to confirm	-Master User -Secondary User
<b>Activate Open Mode</b>	Press <b>5</b> on the main menu Enter your <b>passcode</b> Press # to confirm	-Master User -Secondary User
<b>Deactivate Open Mode</b>	Press <b>6</b> on the main menu	-Master User -Secondary User
<b>Connection of the Lock to the Hub</b>	Press the button on the hub Press <b>7</b> on the main menu	-Master User
<b>Disconnect the lock from the hub</b>	Press <b>8</b> on the main menu	-Master User

### 3. BeeSecure Smart Home Solution

Together with BEE-HUB, not only can you control and view your BEE-LOCK P1 remotely, but you can also configure advanced settings. e.g. add temporary user, view the live status of your BEE-LOCK, manage your users in a more visualized and efficient way.

### 3.1 Download the APP and Register

Before you start exploring all the features of BEE-LOCK P1 using the APP Control, you need to download the BeeSecure App from the Apple Store or Google Play. Scan the QR code to download the APP.



Download for iOS



Download for Android

Register your personal account on the BeeSecure App:

1. Fill in your first name and last name
2. Enter your email address and verification code. A verification code will be sent to the email address you entered before. Read “Terms and Conditions” before you click confirm.

### 3.2 Add BEE-HUB to Wi-Fi

Before setting up any BeeSecure devices, you need to add the BEE-HUB to a WI-FI first. Follow the steps below or the in-app instructions to add the hub.

**Please note, the steps are based on an iOS phone. The User Interface of Android Phone is slightly different. Follow the in-app instructions**

1. Tap + at top right corner of App Home
2. Select **BEE-HUB** from device list
3. Plug the hub with a power supply. You will see the hub indicator flash blue which means the hub is ready to be added to a network.
  - \* If the indicator does not flash in blue, long press the hub button to reset the hub until it flashes in blue.
4. Select Wi-Fi and input the password for the Wi-Fi. Click Next.

\*At the moment, BeeSecure does not support 5G Wi-Fi or Wi-Fi without password.



5. - iOS user: Click **Setup**. The system will redirect you to Wi-Fi setting on your phone. Choose BeeSecure-XXX from the Wi-Fi list, input **BEESECURE** as password. then go back to BeeSecure App. Wait until the caption of the button switches to **Next**. Click **Next**  
  
- Android user: Select BeeSecure-XXX, the system automatically pops up, then click **Next**
6. Wait until the hub has been found, select the device, click **join Wi-Fi** and then **Finish**

On step 5, for the first time use, iOS user will be requested to input the password to connect BEE-HUB and Wi-Fi. The password is **BEESECURE**. After the first time, iOS will remember the password and no longer request to input it again.

Android phone users do not need to input the password

### 3.3 Pair BEE-LOCK P1 with Hub

Pair BEE-LOCK P1 with BEE-HUB to establish the communication between the hub and the smart lock, you can control and view your lock from the APP.

1. Tap **+** at top right corner of App Home
2. Select **BEE-LOCK P1** from the device list
3. Follow the in-app instructions to pair BEE-LOCK P1 with the hub.

When succeeded, you will see a prompt text "**Device has been added**". Return to the App **Home**, the BEE-LOCK P1 will appear on the device list

While pairing the BEE-LOCK P1 and BEE-HUB, please operate within 1-meter distance between the hub and lock. After pairing, you can install the lock up to 20 meters from the hub and set it up from anywhere from your mobile.

### 3.4 Add User from App

With the BeeSecure App, you can add users remotely with more customized settings. For example, user with time-limit access, user with agenda access.

### 3.4.1 Add Secondary User/Regular User with Permanent Access

1. Click the lock you want to configure from the device list
2. Tap the top right corner to proceed
3. Select **User Management**
4. Tap **+** at top right corner to add a new user
5. Select **Secondary** to add a secondary user or **Regular** to add a regular user and input a passcode for the user

Secondary user usually serves as administrator in the system; therefore, it has to be someone with permanent access.

### 3.4.2 Add Regular User with Time-Limit/Agenda Access

BEE-LOCK P1 supports two types of temporary users for multiple entry, these are the Time-Limit user and Agenda User. They are both sub types of Regular User. The difference between Time-Limit user and Agenda User is:

- **Time-Limit User:** You can assign the **Start/End Date and Time** for Time-Limit user. This is ideal for Airbnb host/house owner to host their temporary guests. The Time-Limit User can have multi-entries in the property during the time period specified in the system.
- **Agenda User:** You can specify **Exact Dates and Time** on the calendar for Agenda user. This is ideal for office owners to grant access for their temporary employees who needs to access your property on (ir/) regular basis.

After the expiration of **Time-Limit/Agenda users**, the users will be highlighted in red from the **User Management** list. You cannot edit the access period for the expired users anymore. You can only delete the expired user from the list. However, you can always edit/change user info and access period before the last access date and time you have assigned is reached.

### Add Time Limit User

1. Repeat step 1-5 from the section above 3.4.1 to add a Regular user
2. Click **Time Limit**
3. Set up **Start Date and Time**, then **End Date and Time**

### Add Agenda User

1. Repeat step 1-5 from the section above 3.4.1 to add Regular user
2. Click **Agenda**
3. Select a date from the calendar, Switch on “**Activate**”
4. Set up time range, confirm
5. Repeat step 3-4 to add multiple dates

### 3.4.3 Add OTC User and Share the Code

OTC stands for One-Time-Code. The name says it all, the OTC user can access the property one single time. After the user access the property, the OTC user will be deleted from the list and therefore the code will no longer be valid. You will see a message from the lock message page when the code has been used.

1. Select **OTC** and then tap **+** at the top right corner
2. Specify name and passcode for the OTC user
3. After confirming the creation, Click **Share**
4. Select sharing options and edit the message information if needed.

OTC users do not need to download the app to receive their code to unlock

### 3.5 Delete User from App

After deleting the user, all his/her passcodes will be deleted permanently. From the App, you can delete multiple users at a time.

1. Select **User management**

2. Click **Edit**
3. Tap **Delete** button next to the user you want to delete

### 3.6 Deactivate Open Mode

As mentioned before, you can only activate Open mode locally from the BEE-LOCK P1. However, you can always deactivate open mode from the BeeSecure App.

On the device page, you can view whether the **Open mode** is **ON/OFF**. When open mode is activated, you can tap **OFF** to deactivate it.

### 3.7 Alarm On/Off

When the Alarming is **ON**, you will receive an instant push notification whenever the alarm is triggered. For example, if someone inputs the maximum attempts of invalid passcode (6 times), or when the battery is low. When the alarming is **OFF**, you disable the push notifications but you can still view/receive status/messages of the lock in the app.

Please note, messages are not the same as alarm. Message is everything related to the status of the device (e.g. when a new user is added, when the lock is open etc). The alarm has a higher priority and requires attention from the user (e.g. battery low or too many invalid passcode attempts (6)

Toggle button to **Alarming On**, to allow push notifications to your mobile.

The following operation will trigger alarm and send push notifications to your mobile:

- Battery is Low
- Too many invalid passcode attempts (6 times)
- Open Mode activated
- Lock goes offline
- Lock has been reset

### 3.8 Rename the Lock

It is helpful to name your lock to your desired name, especially when you have multiple locks installed to easily distinguish them.

1. Tap the top right corner of the device page to edit the lock
2. Tap **Device Name** to rename the lock and **Confirm**

### 3.9 Add New Passcode

As Master user, you can add new passcodes to any users. When a user forgot or lost his/her passcode, you can create a new passcode. Max 5 passcodes for each user is allowed.

1. Click on **User Management**
2. Select user you want to add passcode to
3. Tap **+** at top right corner
4. Enter new passcode and confirm

BEE-LOCK P1 detects the strength of the passcode. The passcode has to be 6-10 digits in length and cannot be in simple ascending/descending sequence, like 12345678 or 87654321, or repetitive with other existing passcode stored in the lock.

### 3.10 View Message

From the BeeSecure App, you can view unlimited history messages regarding your BEE-LOCK P1, including, who and at what time has accessed the lock, which user has been created or deleted etc.

There are two ways you can view your history message:

#### From Device Page:

1. Click the lock on the **App Home**
2. At **Status Records** section you can view the history message of the selected lock

#### From Message Page:

1. Click **Message** from the App Menu at the bottom
2. Select the device you want to view the history message

### 3.11 Export Message

You can export lock history message to a specified email for administrative or other purposes.

1. Select **Export** button from Message of the selected device
2. Enter the destination email address and edit the email body

### 3.12 Disconnect BEE-LOCK with BEE-HUB

By disconnecting the lock with the current hub, the history messages of the lock and the previous name of the lock will be removed, but all the user data and previous settings will remain intact. You can disconnect the lock if you want to connect the lock with another hub.

1. Select the lock you want to disconnect
2. Tap the **Edit** button at the top right corner
3. Select **Delete device** to disconnect

You can also disconnect the lock with the hub from the BEE-LOCK P1 locally. The operation is the same as **Pair BEE-LOCK P1 with Hub**, but instead of selecting 7, you need to select **8** to disconnect.

## 4. Security Features

### 4.1 Auto-lock

BEE-LOCK P1 has an auto-lock function. After inputting a valid passcode, you need to rotate the external knob in clockwise direction within **6 seconds** to unlock. After 6 seconds, the lock will automatically enter sleeping mode, you will have to enter the passcode again to unlock.

### 4.2 Auto-Lockout

For security reasons, if a wrong passcode is entered 6 consecutive times, the lock will be blocked for 3 minutes. At the same time, you will receive push notifications to your mobile.

### 4.3 Low Battery Reminder

If you are using BEE-LOCK P1 in App Control Mode, you can view the status of the lock's battery. Whenever the battery level is below 20%, you will receive an alarm on your mobile. Replace the battery as soon as possible.

### 4.4 Emergency Battery Replacement

In case you are using BEE-LOCK P1 in standalone mode, and miss the opportunity to replace the batteries on time, don't panic! You can easily replace the batteries from the external knob following the same process when you installed the batteries

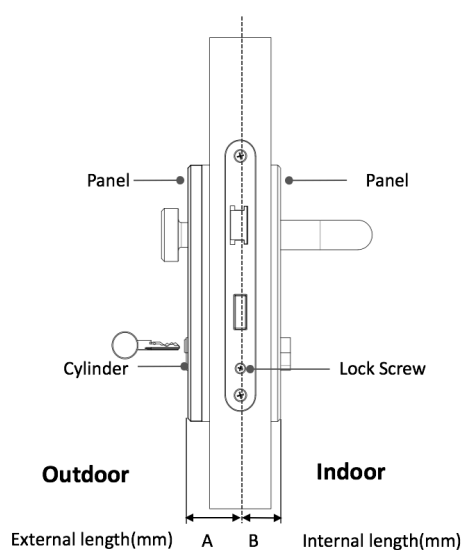
After replacing the batteries, all user data including history message, lock settings will remain unchanged. You will not lose any data.

## 5. Installation

### 5.1 Measurement

BEE-LOCK P1 has 4 different cylinder lengths, all with extendable range on the internal and external sides.

In order to know how to adjust the cylinder length to fit your door, you need to measure the thickness of your door. Below is the guidance on how to do it:



### 5.2 Installation

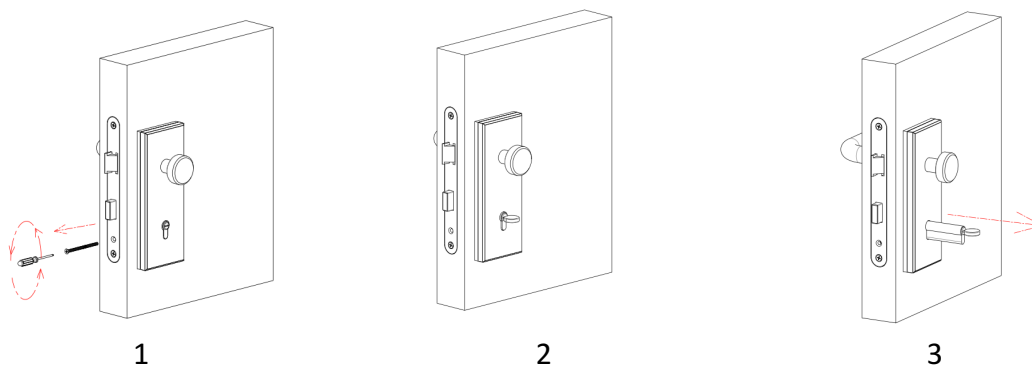
BEE-LOCK P1 fits all euro profiles with door thickness between 40 to 55mm. To install BEE-LOCK P1, all the tools needed are included in the package. No need of drills or wires to install it.

There are 4 steps to install the BEE-LOCK P1

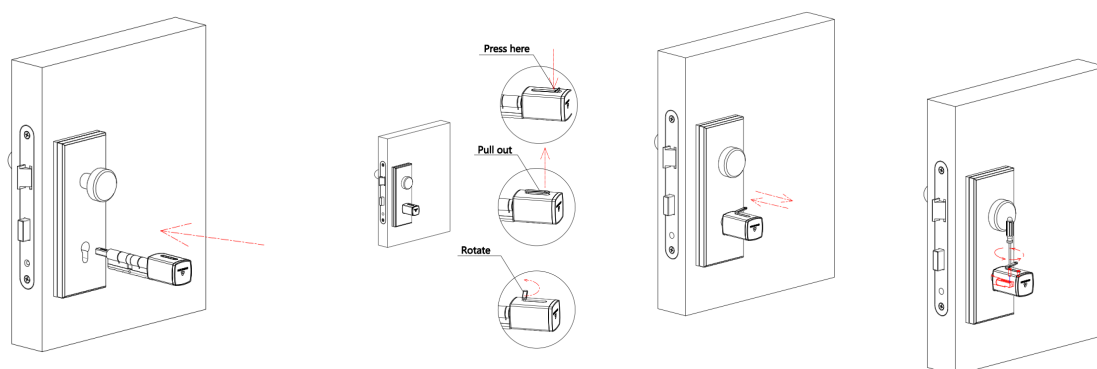
You can adjust the position of the knob to adjust to your door if necessary. The external cylinder can be extended by 5mm per gap to a maximum of 15mm. The internal cylinder can also extend to 15mm.

1. Remove the current cylinder from your door

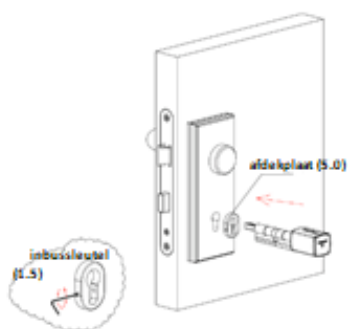




2. Push the external knob into the fitting and use one of the supplied cylinder covers (2,5mm and 5.0mm) if necessary and secure the cylinder.

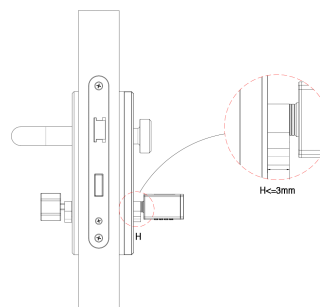


If the cylinder is too short you can extend the length by loosening the screw at the side of the cylinder then pull the cylinder to the correct length.

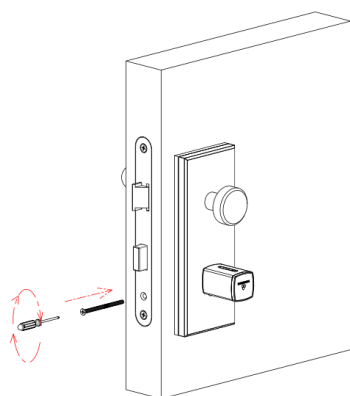


If the cylinder is too long, you can insert the cylinder cover in between the external knob and the security panel.

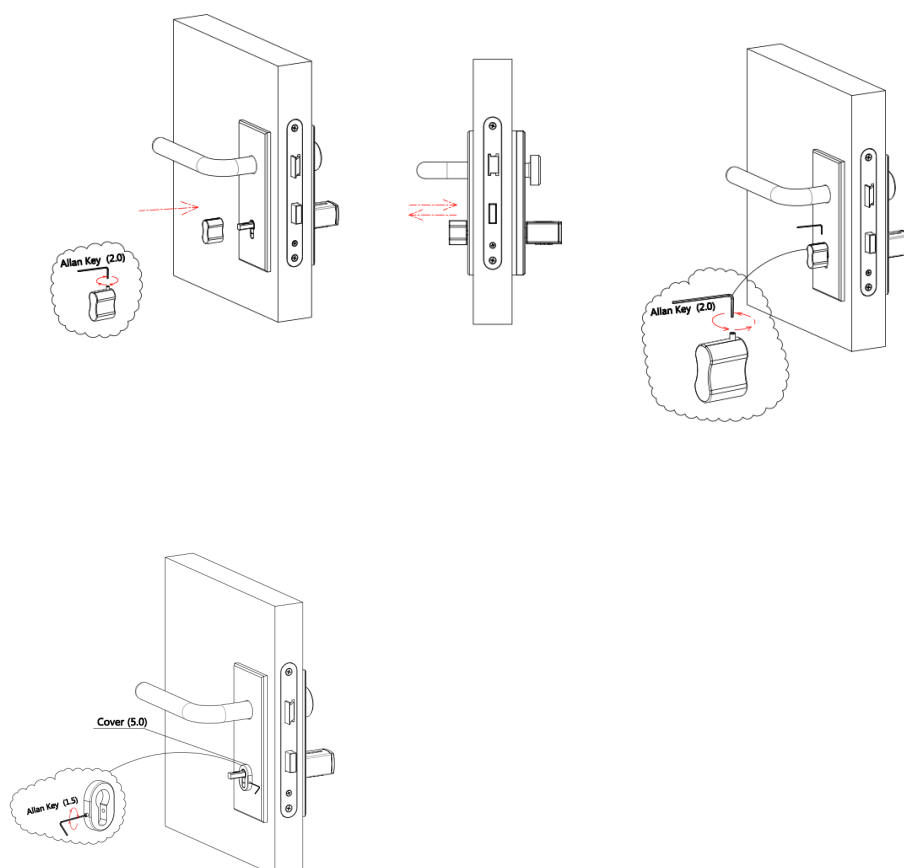
**Safety Note:** Due to safety reason, please ensure the excess part of cylinder from the panel is no more than 3mm



3. Fix the lock screw from the middle.

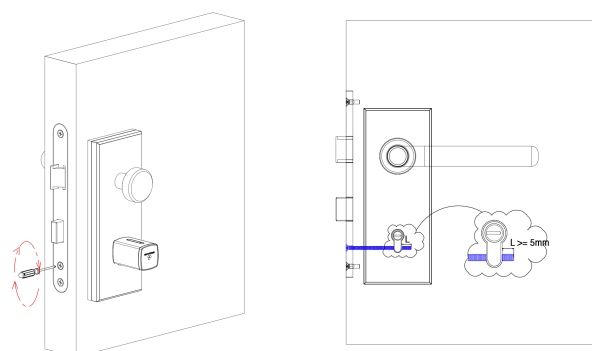


4. Push the internal knob into the fitting and use one of the supplied cylinder covers (2,5mm and 5mm) if necessary and secure the cylinder with an Allen Key.



If the cylinder is too long, you can insert the cylinder cover in between the internal knob and the security panel

**Safety Note:** Please screw in M5 screw all the way to the end to ensure the distance between the edges of M5 and cylinder is at least 5mm



**Safety Notice:** Place the privacy cap (included in the package) to avoid leakage and theft of passcodes.

